

# ARL2300LOCAL (WIN)

Sept.5, 2022

**●Port**  
COM number assigned by Windows to your USB connection. If two or more receivers are connected, click the drop-down menu and select the desired COM number / receiver.

**●Connect**  
Click the Connect button to connect to your receiver and start controlling it.

**●Quit**  
Click the Quit button to terminate receiver control. Settings will be saved.

**●Remote Receiver Power OFF**  
If checked, upon disconnection the receiver is also turned off.

**●MODE**  
Select receiver demodulation mode. AUTO enables automatic mode selection of IF-BW and STEP. (AR5700D: Tetra GSSI group filtering not supported due to hardware limitation)

**●IF-BW**  
Select IF bandwidth manually.

**●ATT/AMP**  
Select input signal attenuation level or RF-Amp. AUTO enables automatic selection.

**●ANT**  
Select an antenna, or ANT-PRG.

**●AF Gain**  
Adjust the volume by dragging the slider or hovering the mouse over the slider and scrolling the mouse wheel up or down.

**●V/U SQL, HF SQL**  
Adjust the squelch level: Use HF SQL for frequencies below 25 MHz, and V/U SQL for over 25MHz.

**●Spectrum Display (hidden by default)**  
Spectrum displayed in real time. Receive frequency is the center frequency.  
Click on spectrum: Receiver is tuned to the clicked frequency.  
Mouse wheel:  
Change span of spectrum display (400kHz to 10MHz).

**●SPAN**  
Select span of spectrum display (400kHz to 10MHz).

**●OPEN**  
Check this box to open the spectrum window.

**●Frequency**  
Change the receive frequency by either:  
- Hovering with the mouse over each digit and scrolling the mouse wheel up or down.  
- Entering the frequency via the PC keyboard + ENTER key or click [ MHz ] button.  
- Hovering with the mouse over the dial symbol and scrolling the mouse wheel up or down.

**●Close button (X)**  
Closes this software window. However click the QUIT button first, otherwise settings will not be saved.

**●Search**  
Tunes through all frequencies between 2 specified frequency limits. Search instructions may be programmed into linkable "search banks".

**●Memory**  
Create and scan banks of memory channels. Banks can also be linked.

**●Offset**  
Simultaneously receive one main frequency and one sub-frequency within +/-5MHz from the main frequency. (Above 25MHz only)

**●2-Band**  
Simultaneously receive one frequency below and one frequency above 25MHz.

**●STEP [kHz]**  
To manually select a frequency step from the dropdown list.

**●BUSY**  
Shows an open squelch. Grayed out when squelch is closed.

**●S-Meter**  
Shows received signal level in dB.

**●VFO-A, B, C, D, E**  
Select a VFO to operate on.  
The curved arrow sign button does import all VFO content from the receiver.

**●Command Terminal**  
Enable the terminal window for sending commands to the receiver. (Details chapter 7.3 in the ARL2300 Ethernet Controller user manual.)

**●SD Card**  
When a SD card is inserted in the receiver, you can activate a recording, play back and delete audio files.

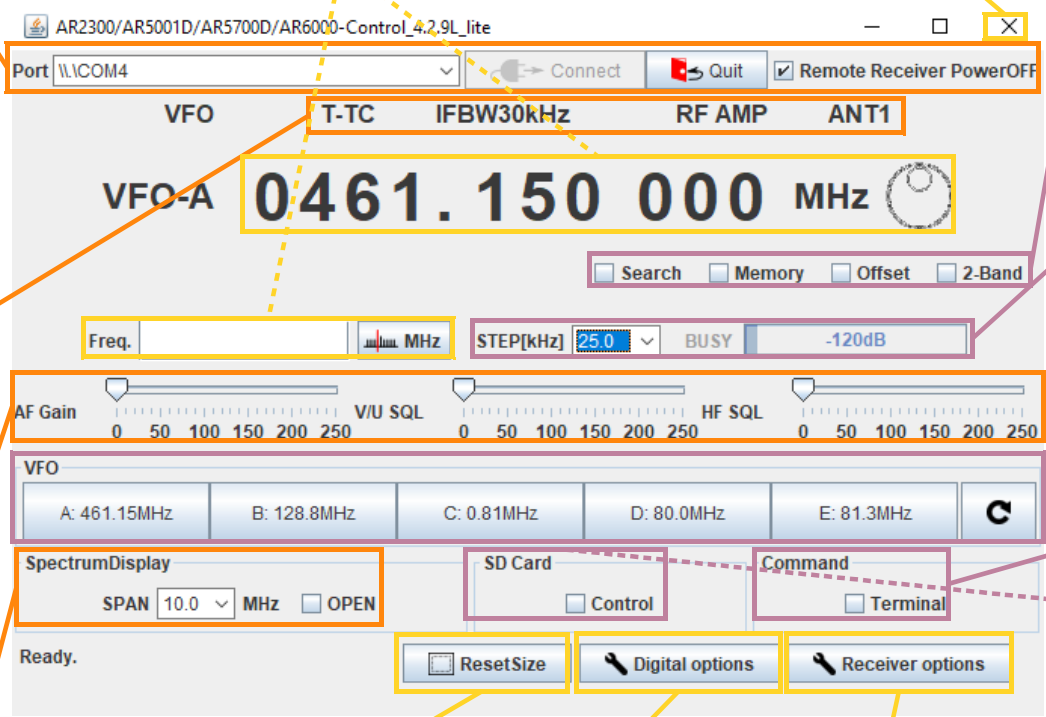
**●Control**  
Check this box to access following parameters:

**●REC**  
Click REC button to start recording. File name format according to date and time; "MMDDhhmm.WAV".  
Note: Same file names are overwritten.

**●PLAY**  
Select a file and click PLAY button to start play back of the selected file.

**●DEL**  
Select a file and click DEL button to delete the selected audio file.

**●STOP**  
Click STOP button to stop recording or play back.

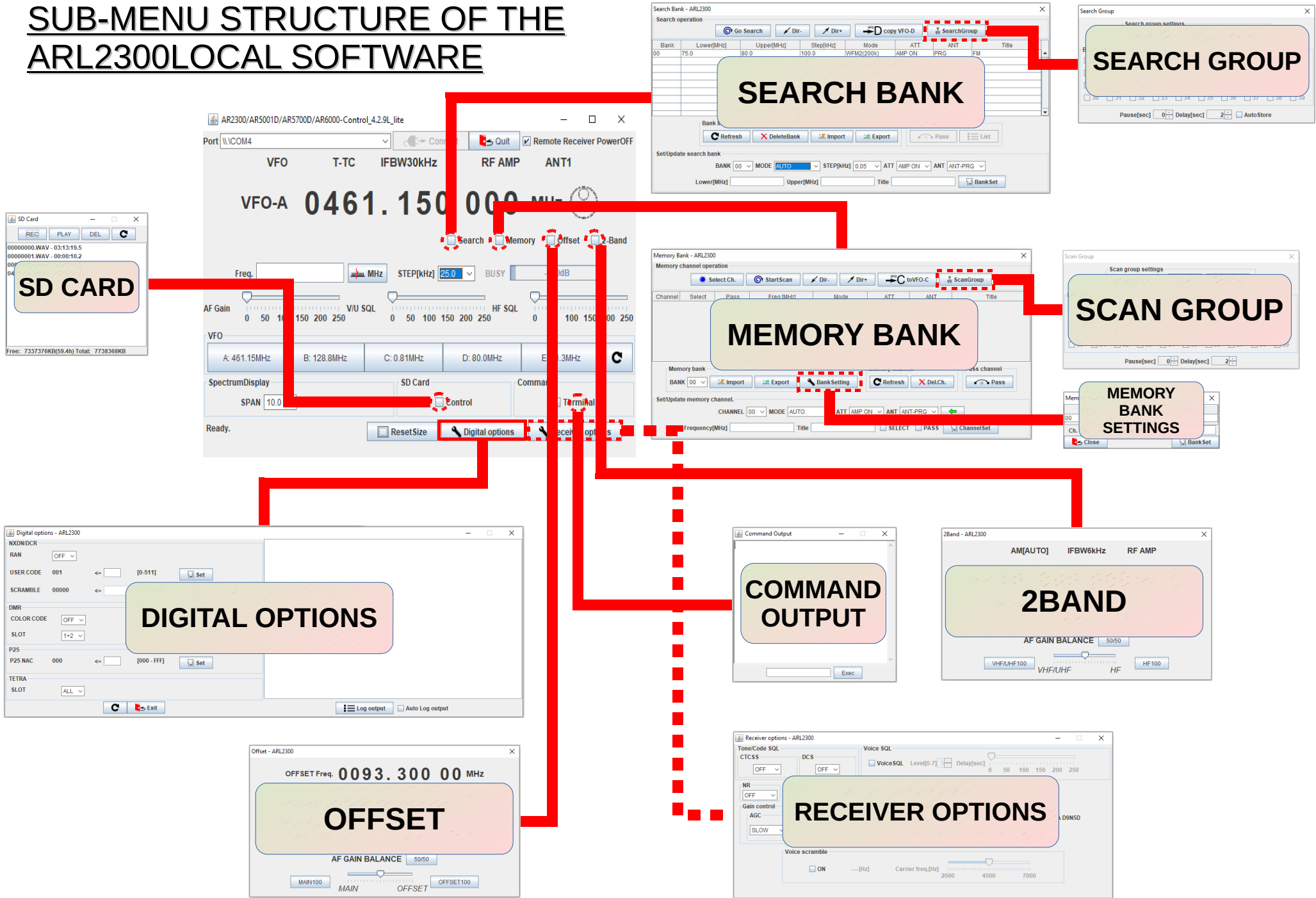


**●RESET SIZE**  
Click to revert the main window to default size.

**●Digital options**  
(Only with AR5700D receiver)  
Various settings regarding NXDN/DCR, DMR, P25 and TETRA signal decoding.

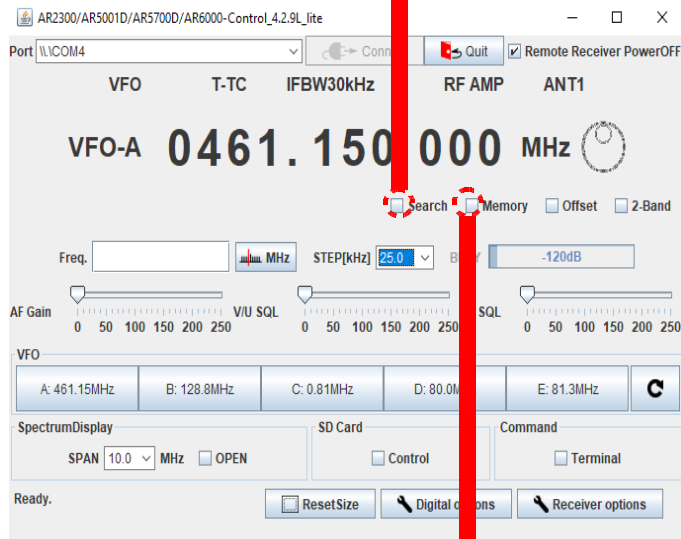
**●Receiver options**  
For various settings regarding CTCSS, DCS, voice squelch, noise reduction, notch, noise blanker, AFC, HF preselection filter, AGC, RF gain, IF shift and analog voice descrambler.

# SUB-MENU STRUCTURE OF THE ARL2300LOCAL SOFTWARE



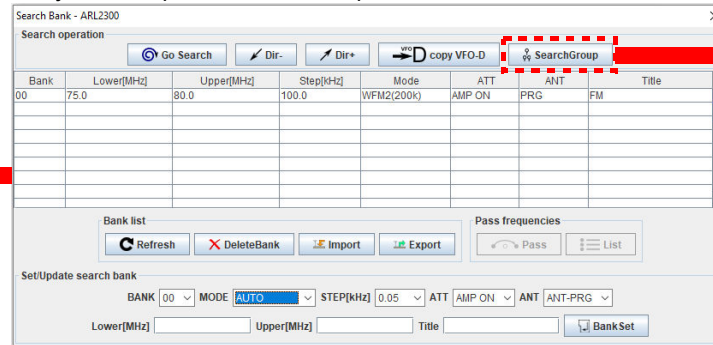
# How to program:

- Memory channels
- Scan banks
- Search banks



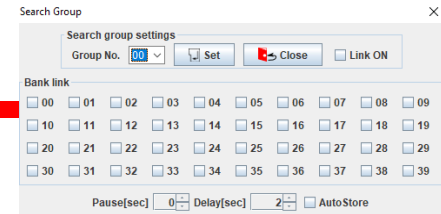
## HOW TO SCAN A SEARCH BANK:

- Select the bank number.
- Click Go Search.
- Adjust the squelch level at the previous window.



## CREATE A GROUP OF LINKED SEARCH BANKS:

- Select the Group No. to assign (except Group 00 for the AR2300 receiver).
- Check the bank number boxes you want to link.
- Check the LINK ON box.
- Click Set to start search.
- Adjust the squelch level if needed.

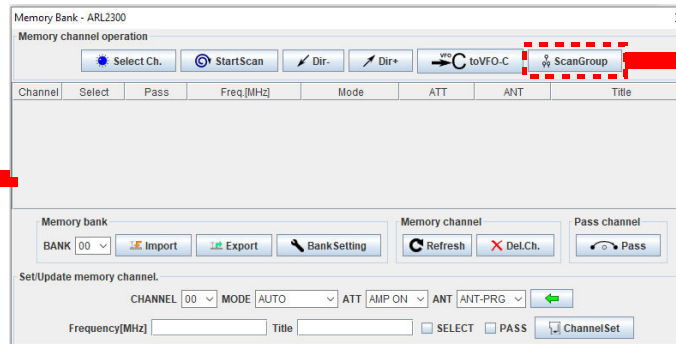


## HOW TO CREATE A SEARCH BANK:

- Select a bank number.
- Set the lowest frequency.
- Set the highest frequency.
- Write a name describing this search bank.
- Set the receive mode, frequency step, amp/attenuator and antenna choice.
- Validate with "BankSet".

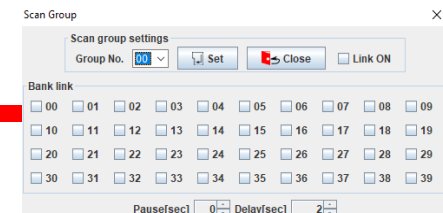
## HOW TO SCAN A MEMORY BANK:

- Select the bank number.
- Click StartScan.
- Adjust the squelch level at the previous window.



## CREATE A GROUP OF LINKED MEMORY BANKS:

- Select the Group No. to assign (except Group 00 for the AR2300 receiver).
- Check the bank number boxes you want to link.
- Check the LINK ON box.
- Click Set to start the scan.
- Adjust the squelch level if needed.



## HOW SAVE A FREQUENCY INTO A MEMORY CHANNEL:

- Enter a frequency.
- Select a bank number.
- Select a channel number.
- Write a title describing this frequency.
- Set the receive mode, amp/attenuator and antenna choice.
- Validate with "ChannelSet".