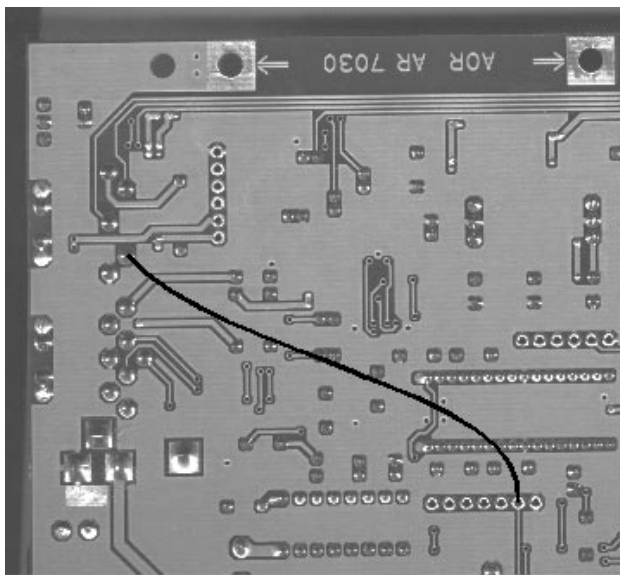


AR7030 technical bulletin 005

AGC output to provide an analogue S-meter drive

An AGC output is available on connector J8 on the main PCB. This can be connected to the spare pin (pin 4) on the remote DIN socket to provide a connection for an external analogue S-meter circuit. Care should be taken when designing an external circuit not to excessively load the AGC line as this will affect the AR7030 AGC calibration.



The PCB layout shows the positions of J8 and the remote DIN socket connections. Connect as short a wire as possible between the two points as shown. A ground connection is available on pin 5 of the remote DIN socket (see operating manual).

The graph below shows the voltage on the AGC line against signal input at the antenna socket on a typical AR7030

