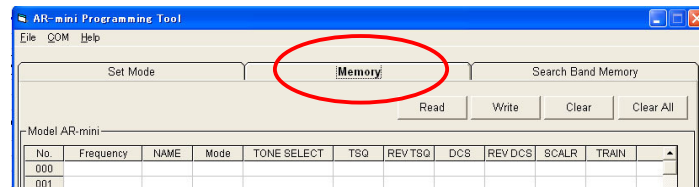


How to load a frequency data base into AR-mini

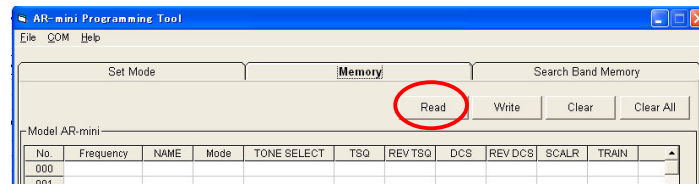
- 1 Save the memory database file (downloaded from the AOR website) to your PC.
- 2 Make sure you have our USB driver installed in your PC. If it is not the case, the driver can be found at <http://www.aorja.com/ar-mini/ar-mini.html>, click on “USB driver” to download it. On the same page, the file “driver install & quick guide” explains how to install the driver.
- 3 Connect AR-mini to your PC with the (optional) PC-mini, hold down the PWR switch for at least 2 seconds while holding down the FUNC, ▼ key and the dial knob to turn the power on. Confirm that “PRG-M” is displayed on AR-mini’s LCD.
- 4 Launch AR-mini’s “Programming tool” software.

***WARNING: THE FOLLOWING PROCEDURE STARTING STEP 5 WILL OVERWRITE ALL MEMORY DATA IN YOUR AR-MINI RECEIVER. BEFORE GOING ANY FURTHER PLEASE BACK-UP THE MEMORY DATA OF YOUR AR-MINI AS FOLLOWS:

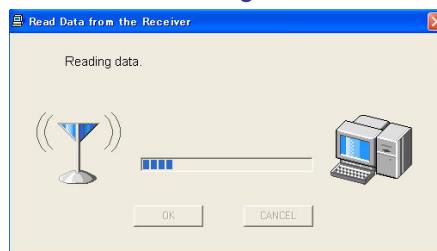
Select the “Memory” tab



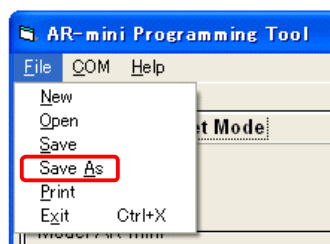
Click on “Read” to download your receiver’s “Memory” data.



The data is being downloaded.

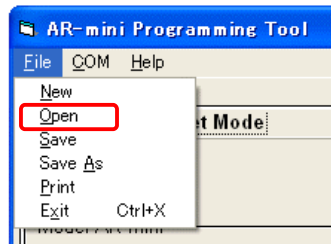


Now save this data on your PC by selecting “File” and “Save as”.

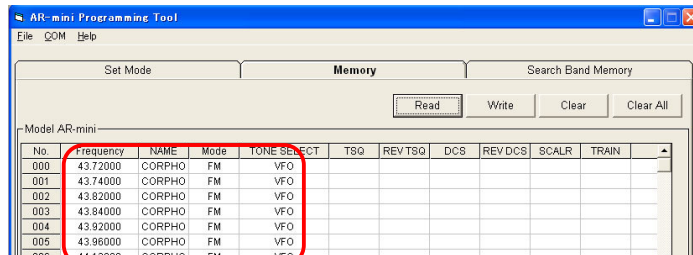


End of backup procedure.

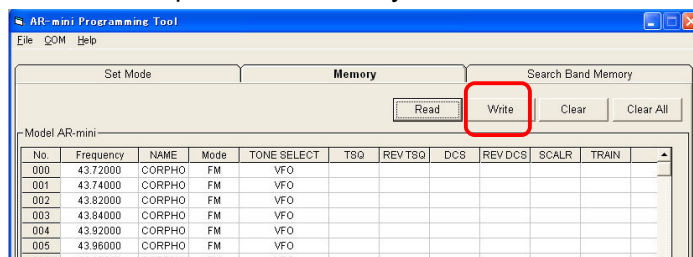
- 5 Select “Open” in the file menu and load the Memory database file you downloaded
In step 1.



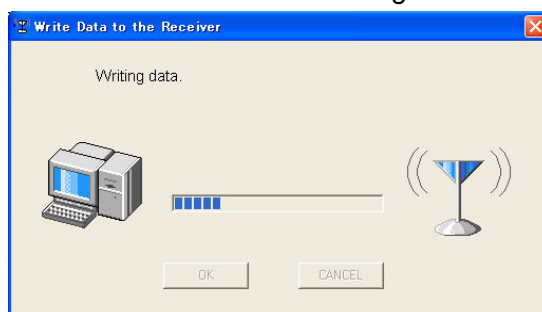
The database will appear in a similar way as below:



- 6 Click on “write” to upload this Memory database to AR-mini



This shows that the data is being written to AR-mini



- 7 You can now disconnect the cable and switch AR-mini OFF and ON again.
8 To scan this new database:

Hold down the FUNC key and press the dial knob. Turn the dial knob to select number 09.

Hold down the FUNC key and turn the dial knob to select BANK. Validate by pressing the dial knob.

Press the V/M key to go to MEMORY. Press the ▼ or ▲ key to select the memory number “000” (bank 0, number 00).

While the first frequency of the database is being received, you should now set the

squelch to the desired level. Press the dial knob twice and turn the dial to the right to the correct level. Validate by pressing the dial knob once.
Press the scan key to start scanning.

For further instructions please refer to the AR-mini manual.