



# AR-IQ v.1.0



## Receiver Control I/Q Record & Playback for AR-ALPHA

## Purpose

AR-IQ software allows direct control of the AR-Alpha receiver through a graphical interface. The recorded samples are acquired through the USB I/Q Port and further processed (filtered and demodulated) by the PC CPU. All commands are sent to the AR-Alpha through the receiver's remote control USB port.

## AF vs. IQ

Compared to a regular AF recording, which only allows recording one frequency at a time, I/Q recording allows you to store and playback a full 1MHz bandwidth with no loss of quality!

This 1MHz bandwidth can be anywhere within the receiving range of the AR-ALPHA, between 10kHz and 3.5GHz.

Off-line, you can listen and decode within the recorded 1MHz range, tuning any frequency as you would in real time. You can even loop a particular time frame to listen repeatedly to a signal received in difficult conditions, or search for and analyze hard to catch signals bursts.

## I/Q on the move...

It is also possible to move the I/Q data to another PC and to listen/decode it off line, provided the other PC has AR-IQ software installed. Although AR-IQ data can be copied to any data storage device (USB key, DVD, external hard-drive, etc...), the data must be first copied to the hard drive of the other PC for AR-IQ software to work properly. It will not work if the I/Q data is read from a DVD, USB key or through a network, since the read speeds would be too slow.

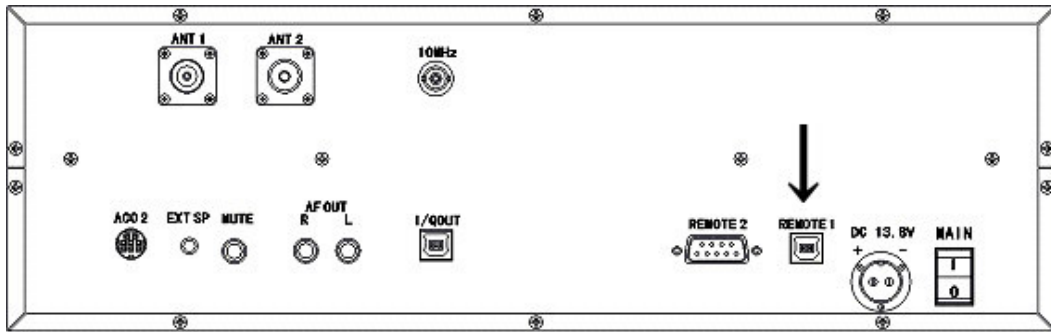
## Minimum system requirements

- 2.5 GHz Dual Core CPU with 1GB RAM
- Two available USB 2.0 High-Speed (480Mbit/s) ports
- 16 bit AC-97 compatible audio board
- 1024 x768 minimum resolution video board and monitor
- 2 button mouse with wheel
- 10 GB or more internal hard-disk
- Supported OS: Windows 2000 SP4, Windows XP SP2, Windows Vista

Note: The above is a reference only and might vary on individual PC systems.

## 1. HARDWARE & USB DRIVER INSTALLATION

- 1) Connect a USB cable to the **REMOTE 1** socket on the rear panel of AR-Alpha, and to a spare USB socket on the PC. (Cable type “USB-A to USB-B”)



- 2) Switch AR-Alpha on.

Windows detects the new hardware and begins the driver installation procedure.

NB: These messages may differ slightly depending on which version of the Windows operating system and which driver version is used. These screenshots were made using Windows XP.

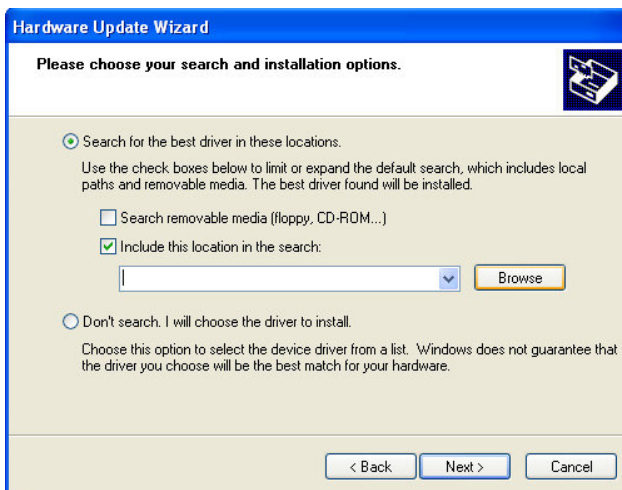


Windows is asking to connect to Windows Update to search for software.

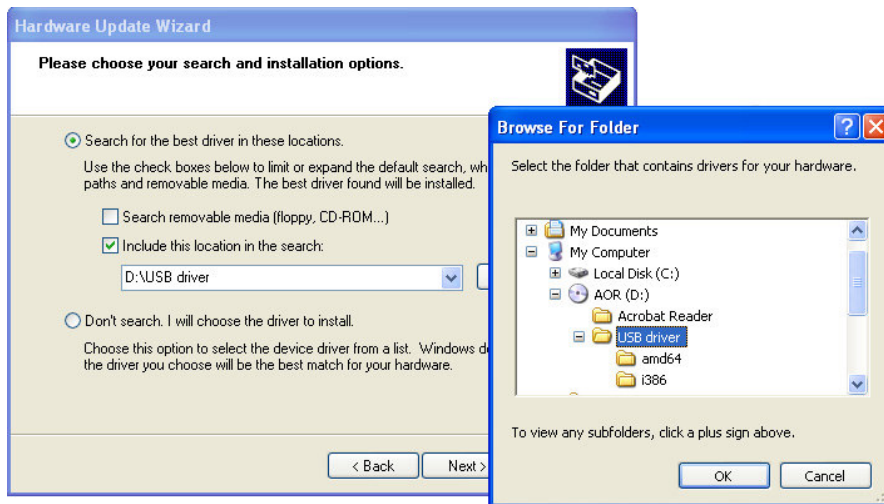
- 3) Select “NO, NOT THIS TIME” and lick “Next”.



- 4) By default the above screen has the “Install the software automatically” box selected, but you need to select the box below, labeled “Install from a list or specific location”. Then click next.



- 5) Locate the folder containing the USB driver by clicking on “Browse”, and validate with “OK”. If you are loading the driver files from the CD supplied with the AR-ALPHA, proceed as shown by selecting the “USB driver” folder inside the CD.



6) Validate your selection with “OK”

Note: A newer USB driver might be available from the following URL:

<http://www.ftdichip.com/ftdrivers.htm>

Click “VCP Drivers”: then select the device number “FT232B”. In that case, download the zip file and unzip it to the folder of your choice. This is then the folder you have to locate in the hardware update wizard.



Windows informs the user about the status of the Windows Logo testing of this USB driver.

7) Click “Continue Anyway”.

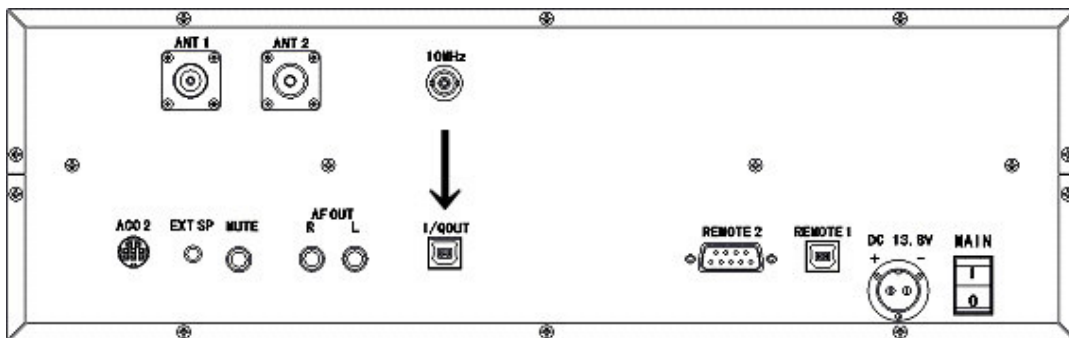
Allow the driver installation to set up automatically.



The USB driver is now installed.

## 2. HARDWARE & I/Q DRIVER INSTALLATION

- 1) Connect another USB cable to the **I/Q OUT** socket on the rear panel of AR-Alpha, and to a spare USB socket of the PC. (Cable type “USB-A to USB-B”)



- 2) Make sure AR-Alpha is switched ON.

Windows detects the new hardware and begins the driver installation procedure.

NB: These messages may differ slightly depending on which version of the Windows operating system and which driver version is used. These screenshots were made using Windows XP.

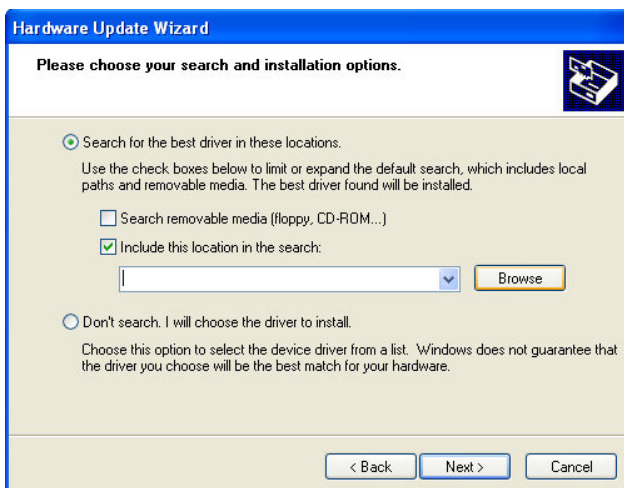


Windows is asking to connect to Windows Update to search for software.

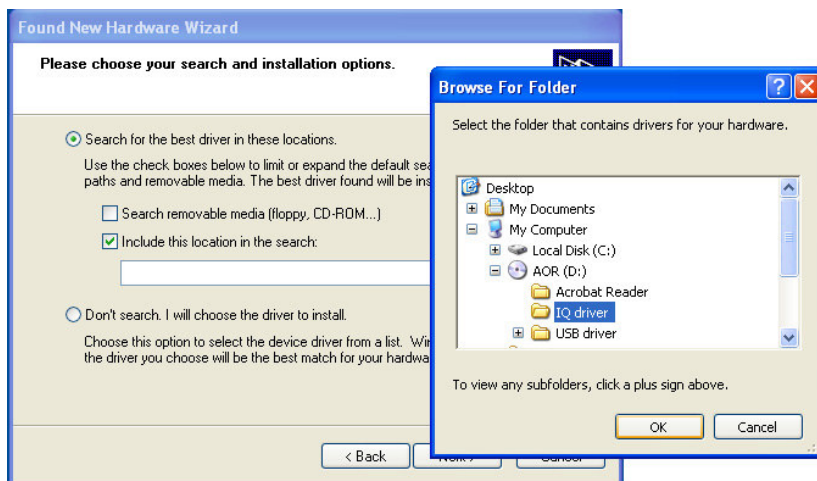
- 3) Select “NO, NOT THIS TIME” and lick “Next”.



- 4) By default the above screen has the “Install the software automatically” box selected, but you need to select the box below labeled “Install from a list or specific location”. Then click next.



- 5) Locate the folder containing the I/Q driver by clicking on “Browse”, and validate with “OK”.  
In case you are loading the driver files from the CD supplied with the AR-ALPHA, proceed as shown by selecting the “I/Q driver” folder inside the CD.



6) Validate your selection with "OK".

Allow the driver installation to set up automatically.



The I/Q driver is now installed.

### 3. Software Installation

The files required to run the AR-IQv1.0 software are:

<i>ar-iq.exe</i>	Main executable
<i>aralphausb.dll</i>	Hardware interfacing DLL
<i>ar-iqv10license.dat</i>	License file (only if registered)

The software will run from any location on your hard drive. When first run, the software will ask you about the COM port to which the AR-Alpha USB Remote Control is connected. After the first run, local settings will be saved in the windows registry.

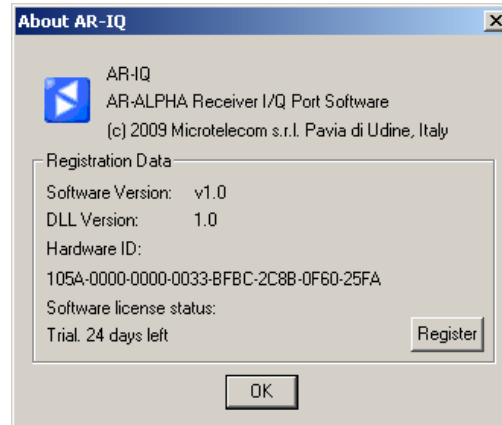
### Registry keys not GUI editable

( *HKCU\Software\Microtelecom s.r.l.\ar-iq\v1.0\* )

- *AGCRiseTime\_ms* Controls the response of the spike rejection filter (min=5, max=100, default=25).
- *AudioLatency* Controls the audio buffer length; lower values minimize latency, higher values are required for slower computers (min=4, max=20, default=9).
- *AutoModeCountry* Sets the region for automatic mode change (based on tuned frequency). Accepted values are 0 for USA, 1 for Japan or 2 for Europe.
- *LevelBarPos* Controls the level bar position (0=left, 1=center, 2=right).
- *MouseWheelReverse* If set to 1, inverts the mouse wheel rotation effect.  
Accepted values are 0, 1.
- *PowerOffOnExit* If set to 1, shuts down the receiver when the program is exited.  
Accepted values are 0, 1.
- *VcomPort* Sets the virtual COM port for CI-V operation (1..255).

## 4. Software registration

The software is provided with a 30-day trial period that will allow testing of all features.



After 30 days, it will be necessary to register the product to enable further use. To show the registration form, just click on the blue icon in the top left corner of the application and select the “Register” button. The following window will pop-up:

All fields should be filled with the requested data. Clicking on the “Request License” button, an e-mail will be sent for the license generation process. Users will receive the license file in the supplied mailbox. If no Internet connection is available, the “Save Request To File” button should be used, thus creating a text file that must be manually sent via email to the dealer for the activation process.

After receiving a confirmation email, users should save the mail attachment in the same folder where the AR-IQ v1.0 software is located. The license is hardware-locked, so a different license file is needed for every computer on which the software is run.

If the registration procedure is completed correctly, the “About” dialog window should look like the one shown in the following screenshot.



**ATT (1)**

Input signal attenuation. 0dB, 1.0dB, 2.0dB or Auto.

**AMPLITUDE (5)**

Aplitude adjustment. Main spectrum reference level and scale settings.

**FREQUENCY (6)**

Receiver frequency setting. Allows tuning using mouse wheel while hovering on digits. Double click to show frequency input dialog.

**Span/RBW (8)**

Span/resolution setting. Adjusts the main spectrum window bandwidth and resolution.

**CF Step**

Center frequency step. Sets the step used when clicking the left/right buttons (◀ ▶) under the main spectrum pane.

**Wheel Step**

Mouse wheel step setting. Sets the step used when spinning the mouse wheel.

**IF FILTER (11)**

Selects I/Q output bandwidth. Selecting "Center" the tuned frequency is always centered in the main spectrum view.

**INPUT SELECT (13)**

Selects the desired input source. Input can be either the receiver or a recorded file.

**PLAYBACK/REC (14)**

Controls file recording and playing. Buttons are Stop (square), Play (triangle) and Record (circle).

**FRONT-END (2)**

Front-end control. Enables Preamp, allows Antenna selection.

**Spect, WfFall, Zoom, Palette, NBW, NBN, Afc, Mono, Labels, PeakSrc, Auto (3)**

Controls main spectrum/waterfall view; zoom and drawing mode and labels. NBW and NBN are noise blankers; Afc is automatic frequency control (FM only); Auto enables automatic mode selection.

**AM, SAM, CW, RTTY, LSB, USB, FM, WFM, DRM, USER (4)**

Selects receiver demodulation type. DRM mode allows receiving digital transmissions (using third-party software).

**AMPLITUDE (5)**

Modifies reference level.

**Waterfall control (7)**

These sliders, enabled only in waterfall mode, allow to adjust speed, brightness and contrast.

**FFT Resolution (9)**

Allows choosing FFT sharpness/update rate.

**AF, NR (10)**

AF Vol allows changing the output volume; NR controls the noise reduction amount.

**S-MTR (12 - pg.2)**

Shows received signal power in RMS or Peak mode.

**MKR (17)**

Markers control. Clr clears all markers, Delta enables relative measurements.

**AGC (17)**

Sets automatic gain control and its speed. SpkRej reduces spikes.

**NB Lev**

Enables Noise Blanker. Slider position adjusts blanking level.

**AVG (15)**

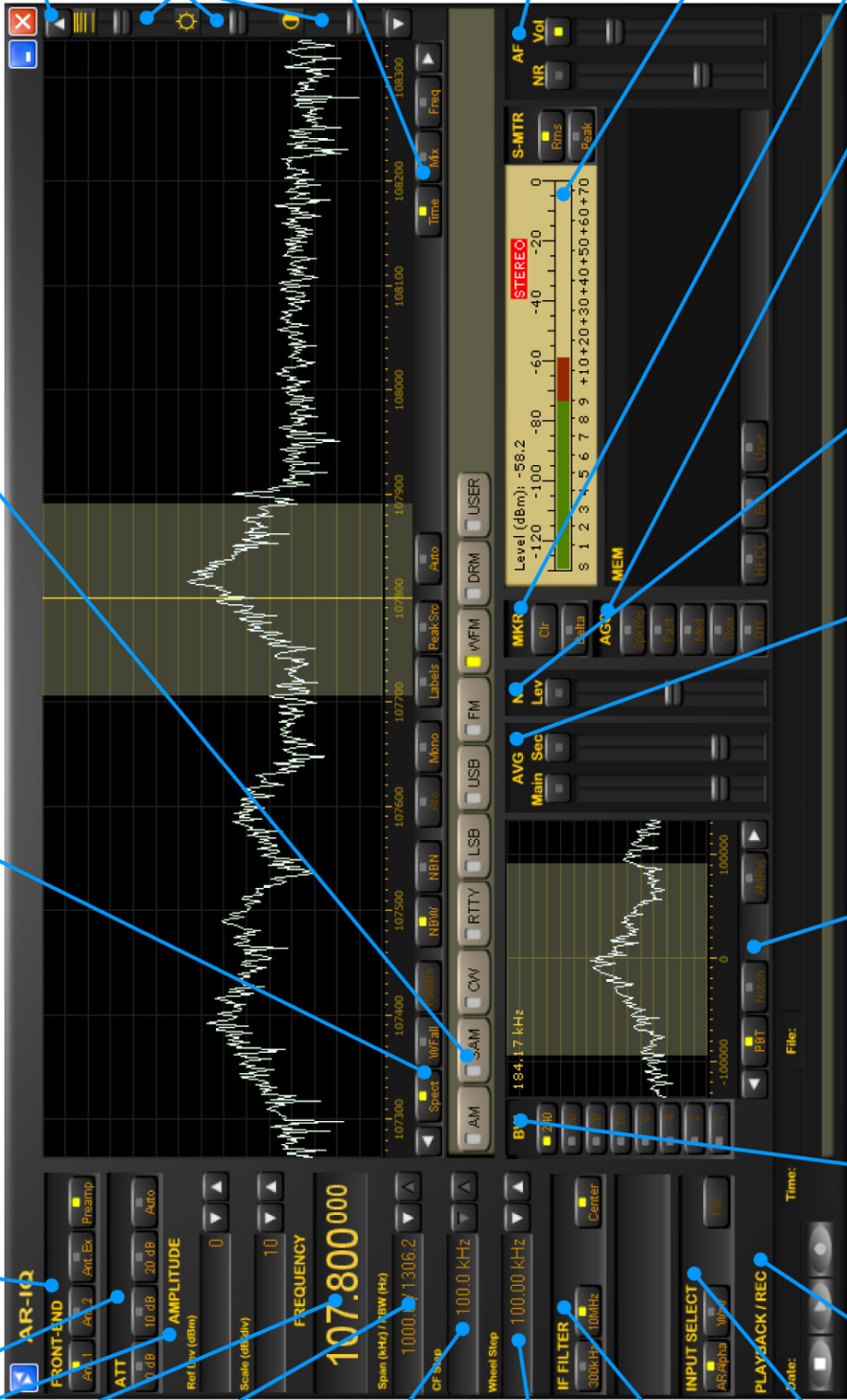
Enables averaging of values shown in main and secondary spectrum windows.

**PBT, Notch, AMRej (15)**

Allows selecting Passband Tuning (PBT), Notch and AM Rejection filters.

**BW (15)**

Controls maximum filter bandwidth shown in the secondary spectrum panel.



## 5. Main Features

### Attenuators (1)

Attenuators allow you to attenuate the input signal by a preferred amount. Users can choose among 0, 10 and 20 dBm attenuation. The “Auto” button enables automatic attenuation, based on the current input signal level.

### Front-End (2)

In the front-end sections, users can control antenna input and select preamp operation. Preamp is on when the button is lit. “Ant.1” and “Ant.2” buttons allow selecting the desired antenna input. If the optional AS5000 antenna relay is present, it's possible to select antenna input 3 or 4 clicking on the “Ant.Ex” button. The currently used antenna button will be lit.

### Main spectrum window controls (3)

Under the main spectrum window, there are 10 buttons that allow user customization of the software. “Spect” button shows line spectrum view, while “Wfall” enables waterfall view. Users can reverse waterfall direction by clicking again on the “Wfall” button. While in waterfall mode, the “Palette” button will be selectable and clicking on it will pop-up a new window that allows palette selection among 9 predefined palettes.

“NBW” and “NBN” buttons control noise-blanking filters and operate at different stages. “NBW” enables a wideband noise blanker working on the full bandwidth range, before demodulation and any other signal processing; “NBN” enables narrow band filtering.

“Afc” enables automatic frequency control (tuning); if enabled, the demodulator will tune the frequency automatically, trying to track small frequency changes in the source signal. This operation mode is only available in FM mode.

“Mono” button is only selectable in WFM mode and forces single-channel audio decoding even if a stereo carrier is detected.

If “Labels” is selected and enabled, the main spectrum view will also show a dBm amplitude scale; moreover, a frequency and amplitude indicator will follow the mouse pointer while hovering on the main spectrum window in both spectrum and waterfall mode.

If “PeakSrc” is also selected, the indicators will snap to the highest peak close to the current mouse position.

If “Auto” is enabled, the software will choose the preferred demodulator and filter settings, depending on the currently tuned frequency and area (Europe, Japan, USA).

## Demodulation (4)

The software allows many demodulators, selectable by clicking on the desired button.

“AM” selects amplitude modulation demodulator. Synchronous demodulation is also possible, by selecting the “SAM” button. “RTTY” and “CW” are self-explanatory, the demodulators will produce a tone when receiving signals. “LSB” and “USB” refer to lower and upper sidebands; these demodulators allow the decoding of AM signals with a suppressed sideband. “FM” and “WFM” demodulators will decode frequency-modulated signals, and in particular the “WFM” mode will allow 260 kHz wide filtering. “DRM” demodulator will output an 8 kHz IF DRM signal on a virtual audio cable (only if third-party software VAC is installed - <http://software.muzychenko.net/eng/vac.html> ); for optimal DRM demodulation, it's best to set the AGC block to “Slow”. “USER” demodulation simply outputs on the VAC zero-IF I/Q samples, after filtering and normalization with current AGC settings.

## Amplitude (5)

While in spectrum mode, users can select a preferred reference level and view scale, clicking on the arrows available on the right side of the “Ref Lev” and “Scale” indicators in the “AMPLITUDE” section.

## Frequency and tuning (6)

This indicator always shows the current tuned frequency. If the operation mode is not set to “Center” (in the “IF FILTER” section), the AR-Alpha frequency can be different; frequency shift in this case is made by the software. The current frequency can be tuned using the mouse wheel while hovering with the pointer on the desired frequency digit. Double clicking on the frequency indicator, a dialog window will appear, allowing direct frequency input. Frequency can also be tuned dragging the main spectrum window (clicking with the left mouse button and moving the mouse left/right while on the main spectrum window).

	Main spectrum view	Secondary spectrum view	Frequency indicator
Mouse drag	If not in “Center” mode, the grey bar can be dragged on the waveform.	Fine tuning can be done dragging the waveform (a red vertical line shows current position).	No effect.
Double click	In “Center” mode, the receiver will tune to the requested frequency. Otherwise, software frequency shift will be used to tune the requested frequency.	The software will tune to the selected frequency.	The direct frequency input dialog will pop up.
Mouse wheel	Currently tuned frequency will be shifted upwards or downwards depending on wheel rotation direction and value set in the “Wheel Step” box.	Filter width (highlighted as a grey zone) will vary symmetrically.	Currently hovered frequency digit changes according to mouse wheel rotation.

## Waterfall controls (7)

On the right side of the software window, there are three sliders that control waterfall appearance. From the top to bottom, the sliders control: waterfall speed, brightness and contrast. They can be operated by dragging the slider or using the mouse wheel while hovering over the controls.

## Span (8)

It's possible to select the desired frequency span by clicking on the arrow buttons in the Span field. The smaller the span, the slower the main spectrum window will refresh.

## FFT Resolution (9)

"Time", "Mix" and "Freq" allow you to select the desired FFT characteristics, preferring update rate or FFT spectral resolution.

## Volume control (10)

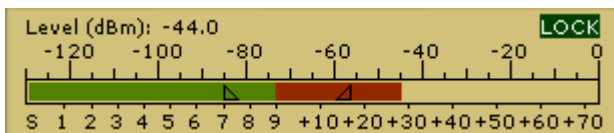
"AF Vol" controls output volume. Clicking on the button, the output can be muted; the slider controls volume output level. In "DRM" and "USER" mode there is no sound card output (all data is redirected to the Virtual Audio Cable).

## IF Filter (11)

The "IF Filter" section allows selecting the AR-Alpha I/Q output bandwidth. The "Center" button forces the currently demodulated signal to be in the center of the main spectrum windows (and disables the software frequency conversion block). If not selected, all viewable frequencies are tunable without changing the AR-Alpha tuned frequency (through software frequency conversion).

## S-Meter (12)

The S-Meter shows the current signal level and also provides the means to set squelch and auto mute



functions. Squelch level can be enabled clicking the bar in the S1-S9 (green) zone with the left mouse button; any signal under the set

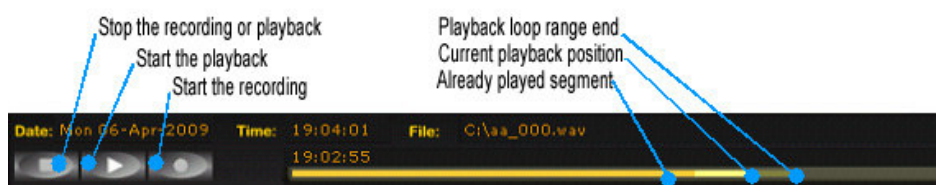
value will not produce output. The Auto Mute level is set clicking in the S9 - S9+70 (red) zone; any signal higher than the limit will produce no output. Both functions can be disabled by right clicking on the limits symbols (triangles painted directly on the bars).

## Input Select (13)

The input select section allows a choice of signal source. The "AR-Alpha" button selects real time processing; by choosing "Wav" and then "File" it's possible to replay any previously recorded session.

## Playback – record (14)

By using the “Playback/Record” section, it's possible to control the recording and playback software features. The square button stops both playback and recording; the triangular button starts playback; the circular button starts recording, asking for path and filename before the actual start. While playing a recorded file, a yellow progress indicator bar will fill up. Users can jump backward and forward in the recording by just clicking on the bar. It is also possible to repeat a segment, simply by highlighting it with the mouse (i.e. clicking on the beginning and holding the left mouse button down, moving the mouse pointer to the end of the desired segment and finally releasing the mouse button). The software will repeatedly decode the selected segment until another click on the bar is issued or the stop button is pressed.



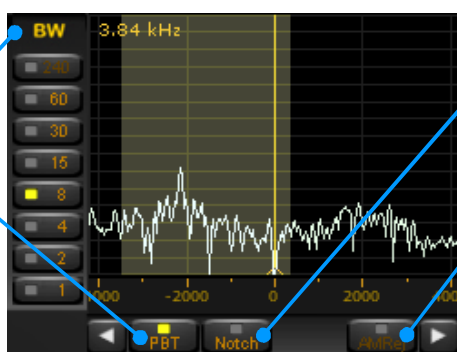
I/Q recording takes about 700MB of disk space per minute, which is 42GB per hour, or 1TB for 24 hours. Make sure you have plenty of disk space available depending of the desired length of the recording.

## Secondary spectrum view (15)

In the secondary spectrum view, users can fine-tune the selected filter and enable Notch and AM Rejection filter.

**Filters Bandwidth**  
There are 8 predefined bands. The 240 kHz filter is used in WFM demodulator mode only.

**PBT**  
PassBand Tuning allows you to fine-tune the filter passband using the mouse wheel or dragging the filter edges (using the left mouse button). The right mouse button allows dragging both edges at the same time.



**Notch Filter**  
If Notch is selected, double clicking on any frequency will enable the filter. Attenuation is tunable using the mouse wheel. Filter center can be dragged with the left mouse button.

**AM Rejection**  
AM Rejection can be enabled by holding SHIFT and double clicking on the desired frequency in the secondary spectrum window. A red line will show the current setting. The filter can be disabled holding SHIFT while right clicking on the secondary spectrum window.

## Averaging (16)

Main and secondary spectrum display averaging can be enabled by clicking on the button over the respective sliders. Slider positions set the number of averages used, the higher the slider position (and, as a consequence, the number of averages), the smoother the spectrum views.

## **AGC (17)**

The automatic Gain Control block has 5 operational modes: “SpkRej” is spike rejection mode; “Fast”, “Med” and “Slow” refer to the gain variation speed. By selecting “Off”, the AGC processing block will be bypassed and the output level will be manually adjustable using the volume slider.

## **Markers (18)**

The software allows placing 4 markers on the displayed frequency range. Markers can be set by right-clicking on any frequency in the main spectrum window; indicators will appear in the top right corner of the main spectrum view. “Clr” button removes all markers, while “Delta” button enables differential measures among markers, using the first one as reference.