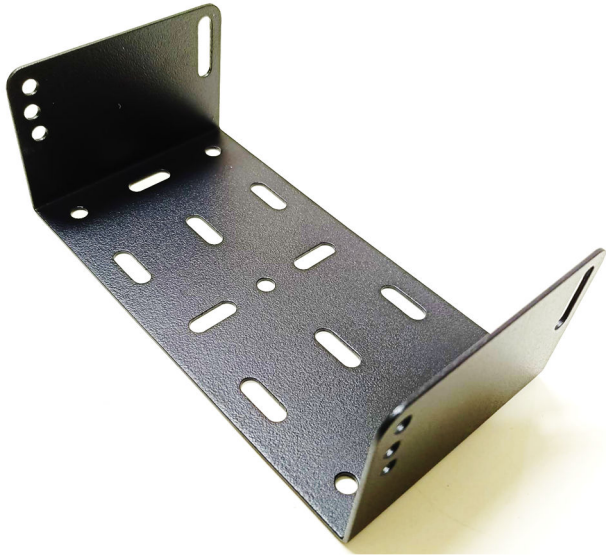


# MMDV3 Mobile Mounting Bracket for the AR-DV3 Digital Voice Receiver

## Setup Instructions

This sheet combines drawings and photos with best-practice installation notes to give a clear, practical setup guide for mounting the AR-DV3 in a mobile or fixed operating position.



MMDV3 bracket overview

### Quick facts

- Designed for the AR-DV3 receiver only. Not compatible with the AR-DV1 receiver.
- AR-DV3 side mounting holes: M4, maximum screw depth 10 mm.
- Bracket can be fitted above or below the receiver.
- Bracket approx. weight: 350g
- Available tilt settings are approximately 8 degrees and 14 degrees, depending on hole selection.

## Supplied parts

Item	Qty.	Use
Nylon washer (milky white)	8 pcs. (includes 4 spares)	Place between the bracket and the receiver at the side-bolt locations.
M4 upset bolt (black)	4 pcs.	Secures the bracket to the receiver; use 2 on each side.
Tapping truss screw (black)	4 pcs.	Secures the bracket to the mounting surface.

### Before you start

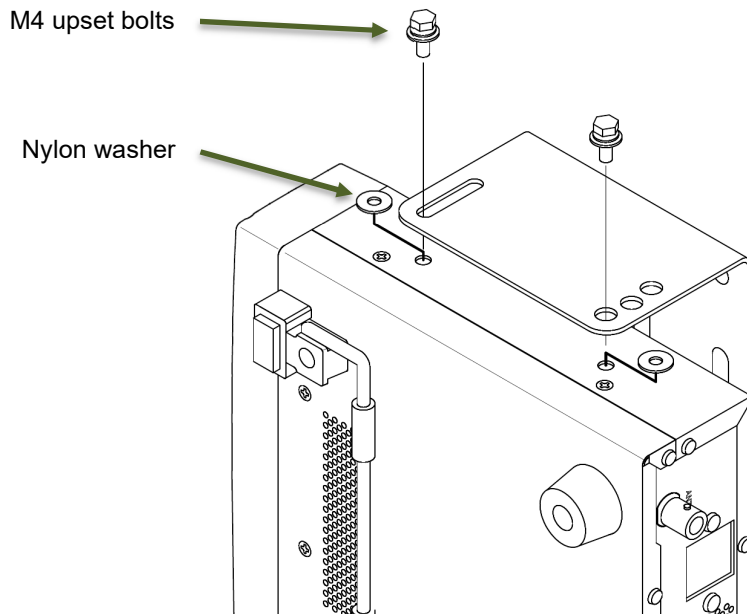
- Turn the receiver OFF and disconnect power, antenna and accessories before fitting to the bracket.
- Choose a location with good visibility, cable access and ventilation. Avoid heating vents or any location that could interfere with safe vehicle operation.
- Test-fit the receiver and bracket in the intended location before drilling any mounting holes.
- Do not substitute longer side screws. The AR-DV3 side mounting screw specification is M4 with a maximum depth of 10 mm.

## Step 1 - Mount the bracket to the vehicle, shelf or panel

1. Decide the basic orientation first: bracket above the receiver for an under-dash style installation, or bracket below the receiver for a console / shelf style installation.
2. Hold the bracket in the intended position and confirm there is enough clearance for the receiver front controls, the rear connectors, the SD card / USB access and cable bend radius.
3. Check that the top speaker / vent area remains clear and that air can flow around the receiver case.
4. Use the base of the MMDV3 bracket as a drilling template and mark the mounting-hole positions on the mounting surface.
5. Drill suitable pilot holes for the surface material. Use the four supplied black tapping truss screws where appropriate, or use user-prepared bolts, washers and nuts if the mounting surface requires through-fastening.
6. Secure the bracket, then fully tighten the surface-mount screws.

## Step 2 - Attach the receiver to the bracket

1. Place one nylon washer at each bracket-to-receiver screw point. Align the side hole / slot pattern with the AR-DV3 side mounting holes.
2. Install the four black M4 upset bolts - two per side. Start all bolts first, leave them slightly loose, then adjust the receiver angle.
3. Once the preferred angle is selected, tighten the four side bolts evenly. Do not overtighten.

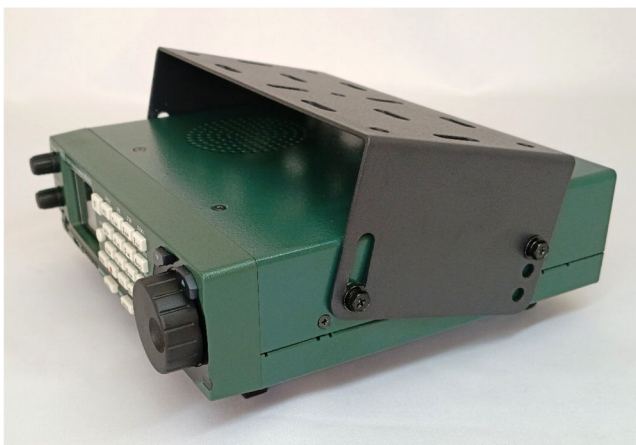


*Assembly drawing showing the bracket fitted above the receiver.*

### Good practice

Choose a rigid mounting point, use the bracket as the drilling template, and set the viewing angle so the display is easy to read from the operating position.

### Mounting orientation examples



Bracket above receiver  
Under-dash use for example

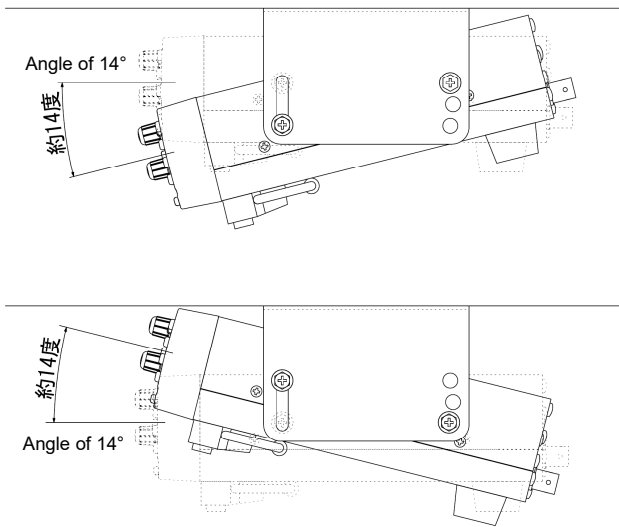


Bracket below receiver  
Common console / shelf style position

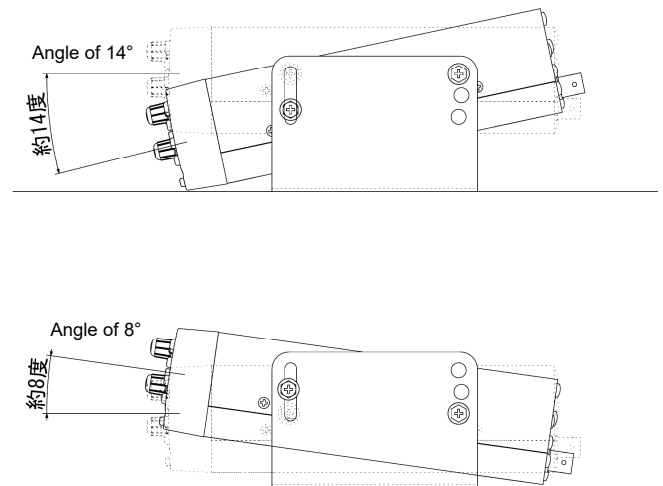
## Viewing-angle options

Depending on whether the bracket is fitted above or below the receiver, and which side hole / slot combination is selected, the MMDV3 provides several viewing-angle positions. The angle drawing shows positions of approximately 8 degrees and 14 degrees.

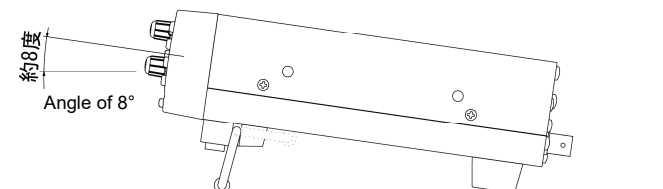
Bracket above receiver



Bracket below receiver



Receiver without bracket fitted, on its stand



*Approximate tilt positions shown: 8 degrees and 14 degrees.*

## Final check

- Display is readable from the operating position.
- Dial, keypad, volume and squelch controls are unobstructed.
- Rear power, antenna and accessory leads are not under strain.
- Top speaker / vent area is not blocked by trim or panel material.
- All side bolts and mounting screws are secure. Re-check after the first trip or operating session.